

Tailored  Stories®

PILLOWPAL



Tailored Stories®

PILLOWPAL SINGLE LAYER MUSLIN 100% COTTON



RABBITS' HOLE

Product code: PPSRHXU-M

\$20 // MOQ 5 Pieces in Mix
SRP \$US70



TAZ'S TEA TIME

Product code: PPSTTXU-M

\$20 //MOQ 5 Pieces in Mix
SRP \$US70



THE GIRAFFE & LION

Product code: PPSGLXU-M

\$20 // MOQ 5 Pieces in Mix
SRP \$US70



MOON LOST HER EARRING

Product code: PPSMEXU-M

\$20 // MOQ 5 Pieces in Mix
SRP \$US70



SPARKLES

Product code: PPSSPXU-M

\$20 // MOQ 5 pieces in Mix
SRP \$US70



SWEET TOOTHED BEAR

Product code: PPSTBXU-M

\$20 // MOQ 5 Pieces in Mix
SRP \$US70



GARDEN FAIRY

Product code: PPSGFXU-M

\$20 // MOQ 5 Pieces in Mix
SRP \$US70



RAINBOW RABBITS

Product code: PPSRRXU-M

\$20 // MOQ 5 Pieces in Mix
SRP \$US70



TUNGA

Product code: PPSTUXU-M

\$20 //MOQ 5 Pieces in Mix
SRP \$US70

Tailored Stories®

PILLOWPAL DOUBLE LAYER MUSLIN 100% COTTON



RABBITS' HOLE

Product code: PPDRHXU-M

\$35 // MOQ 5 Pieces in Mix

SRP \$US87



TAZ'S TEA TIME

Product code: PPDTTXU-M

\$35 //MOQ 5 Pieces in Mix

SRP \$US87



THE GIRAFFE & LION

Product code: PPDGLXU-M

\$35 // MOQ 5 Pieces in Mix

SRP \$US87

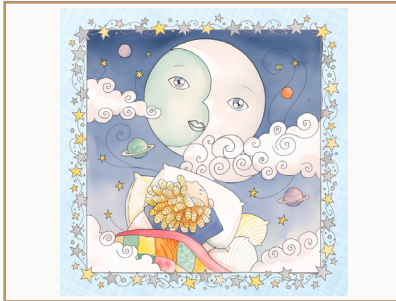


MOON LOST HER EARRING

Product code: PPDME XU-M

\$35 // MOQ 5 Pieces in Mix

SRP \$US87



SPARKLES

Product code: PPDSPXU-M

\$35 // MOQ 5 pieces in Mix

SRP \$US87



SWEET TOOTHED BEAR

Product code: PPDTBXU-M

\$35 // MOQ 5 Pieces in Mix

SRP \$US87



GARDEN FAIRY

Product code: PPDGFXU-M

\$35 // MOQ 5 Pieces in Mix

SRP \$US87



RAINBOW RABBITS

Product code: PPSRRXU-M

\$35 // MOQ 5 Pieces in Mix

SRP \$US87



TUNGA

Product code: PPDTUXU-M

\$35 //MOQ 5 Pieces in Mix

SRP \$US87

Tailored Stories®

PILLOWPAL DOUBLE LAYER WINTER POLYESTER & SPANDEX



RABBITS' HOLE

Product code: PPDRHXU-S

\$35 // MOQ 5 Pieces in Mix

SRP \$US87

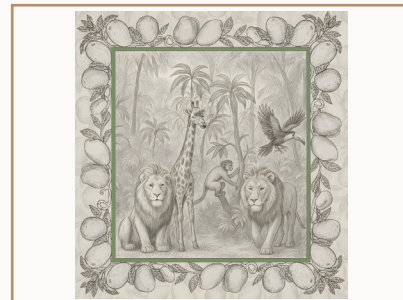


TAZ'S TEA TIME

Product code: PPDTTXU-S

\$35 //MOQ 5 Pieces in Mix

SRP \$US87



THE GIRAFFE & LION

Product code: PPDGLXU-S

\$35 // MOQ 5 Pieces in Mix

SRP \$US87



MOON LOST HER EARRING

Product code: PPDME XU-S

\$35 // MOQ 5 Pieces in Mix

SRP \$US87



SPARKLES

Product code: PPDSPXU-S

\$35 // MOQ 5 pieces in Mix

SRP \$US87



SWEET TOOTHED BEAR

Product code: PPDTBXU-S

\$35 // MOQ 5 Pieces in Mix

SRP \$US87



GARDEN FAIRY

Product code: PPDGFXU-S

\$35 // MOQ 5 Pieces in Mix

SRP \$US87



RAINBOW RABBITS

Product code: PPDRRXU-S

\$35 // MOQ 5 Pieces in Mix

SRP \$US87



TUNGA

Product code: PPDTUXU-S

\$35 //MOQ 5 Pieces in Mix

SRP \$US87

Tailored Stories®

PACKAGING ALTERNATIVES & PRICING



MAGNETIC BOOK BOX

Product code: MB001 Goes flat in shipping

\$6



FOLDABLE BOOK BOX

Product code: FB001
Requires minimum Assembly

\$4



FABRIC BAG

Product code: TB001
Requires minimum Assembly

\$4



MOQ

- PILLOWPAL SINGLE LAYER MUSLIN 100% COTTON

1 Box - 30 Units -Blanket+ Plush Toy-Average Weight : 6 Kilograms

MOQ

PILLOWPAL DOUBLE LAYER MUSLIN 100% COTTON

1 Box - 20 Units -Blanket+ Plush Toy-Average Weight : 6 Kilogram

MOQ

PILLOWPAL DOUBLE LAYER WINTER POLYESTER & SPANDEX

1 Box - 15 Units -Blanket+ Plush Toy-Average Weight : 7.5 Kilogram

REFERENCE PRICING – FEDEX AIR DELIVERY

BEST PRICES SHOWN FOR 25 KILOGRAM BOXES

NOTE: WEDNESDAY INTERNATIONAL DELIVERIES HAVE A 50% DISCCOUNT
FROM COLOMBIA IN FEDEX



Brand & Company Profile

Tailored Stories is a Colombian-born children's brand that transforms storytelling into wearable experiences. Each garment is built around an original story, illustrated and narrated, turning clothing into a medium where imagination, craftsmanship, and emotional connection come together.

What began as a social-impact initiative to create dignified employment for mothers head of households, has evolved into an international brand rooted in what we call Social Creativity: everyday objects elevated through narrative, design, and purpose- Our products are designed to be timeless, collectible, and meaningful-created for children, cherished by families, and valued by concept-driven retailers worldwide.

Manufacturing & Origin

Country of Manufacture: Colombia

Production Model: Small-batch, ethically produced

Social Impact: Garments and soft goods are made by skilled women artisans and seamstresses, many of them mothers head of households, under fair and dignified working conditions.

Shipping & Logistics

Primary Shipping Point: Guarne, Antioquia - Colombia

International Shipping: EXW Ex Works

Lead Time:

First Orders: 6 weeks. Ask us for personalized shipping planning.

Reorders: 6 weeks. Ask us for personalized shipping planning.

In-Stock Items : Contact us for more info

All orders start when 40% of the order value is made.

All orders are shipped once 60% remaining balance is made.

Collections Calendar

2 main collections yearly:

Spring-Summer

Autumn-Winter

Each collection introduces new stories, characters, and illustrations while maintaining continuity within the Tailored Stories universe.

Note: Box art work can be sent to be produced locally for orders over 250 items.